

CUT CARBON, SAVE PROFITS, FOR FREE

We're offering free carbon footprinting and electricity-saving support to small and medium-sized hospitality businesses as part of a trial, fully funded by the Department for Energy Security and Net Zero (DESNZ).

We'll pinpoint where your profits are being lost through electricity waste and show you exactly how to fix it.

We understand that hospitality is a fast-paced industry, and you don't have the time or resources to make mistakes. That's why we keep it quick, simple, and tailored to your business.

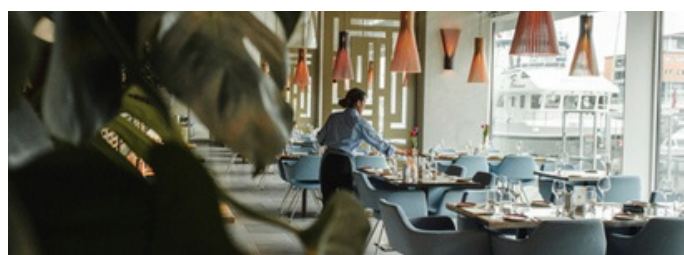
You'll cut carbon, recover profits, and empower your team, all while building a great story to share with your customers.



THE AVERAGE PUB LOSES
£2,000 A YEAR
THROUGH ENERGY WASTE



THAT'S THE SAME AS POURING
16,000 PINTS
STRAIGHT DOWN THE DRAIN



**OVER
2,000 VENUES
ALREADY SUPPORTED**



**MORE THAN
£4.3 MILLION
IN PROFIT SAVED**

NOW, IT'S YOUR TURN

We're here to help you unlock savings — with no cost, no complexity, just results.



**ZERO
CARBON
SERVICES**

WHAT YOU'LL GET



**ZERO
CARBON
SERVICES**

A TAILORED CARBON REDUCTION PLAN



- Focused on the reduction of electricity, waste and water
- Full carbon footprint breakdown, including hotspots
- Bespoke reduction initiatives and practical tools

CARBON COACH



- Continual energy monitoring
- 1-to-1 coaching on electricity and carbon reduction
- Behavioural change campaigns for lasting reduction

WHAT'S INVOLVED?

Here's what we need from you:

- A **smart meter** to join the trial. Unsure if you have one? Check out the next page
- **Time** with our expert coaches
- Quick before and after impact **reporting**
- A **commitment** to cutting carbon and energy waste

You'll be engaging with our expert coaches over 3 months, receiving nearly seven hours of support each month, including surveys and coaching calls.



INTERESTED?

Sign up at www.zerocarboncompany.org/sme-trial to apply, trialists are selected at random.

The first trial starts at the beginning of June, with limited spaces – don't miss out!



Ts&Cs will apply.

DO I HAVE A SMART METER?

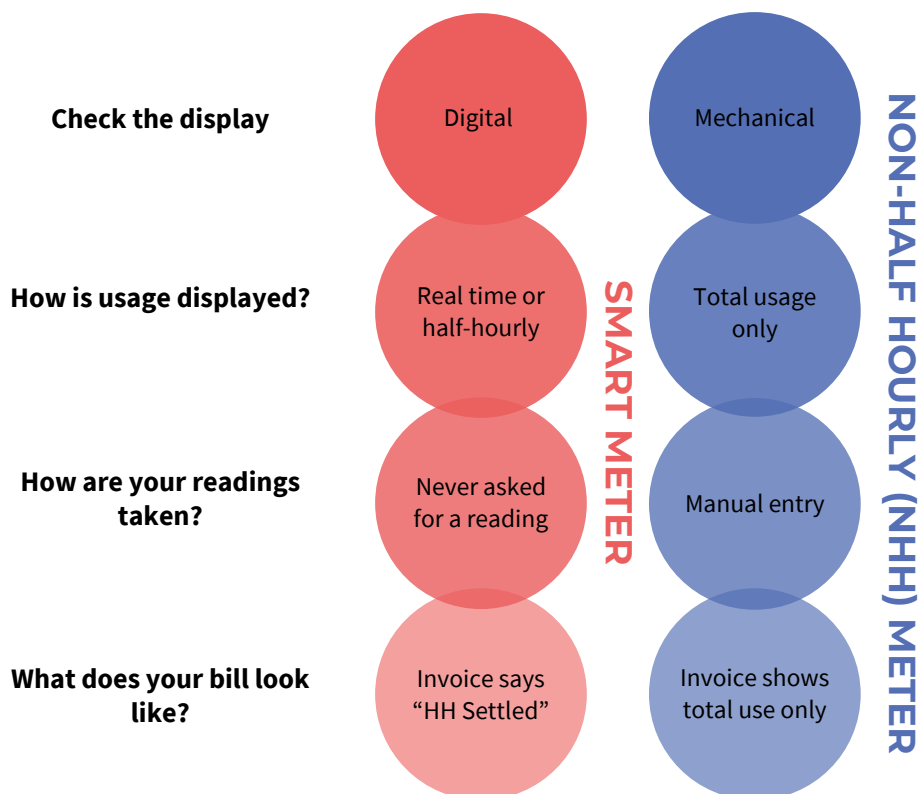
All trialists must have a Smart Electricity Meter to take part in this part of the trial. There are two main types, SMETS and AMR meters.

These meters allow your half-hourly (HH) electricity use to be recorded and transmitted to your energy provider.

We will be accessing this data and bringing it into our analytics platform, to identify your energy hotspots and provide support on reducing these and therefore your costs.



IS IT A SMART METER OR A NON-HALF HOURLY (NHH) METER?



STILL NOT SURE?

Send us your meter number and we can check

Don't have a smart meter but want to know more about installing one?

VISIT: <https://smart-meters-for-business.smartenergygb.org/>